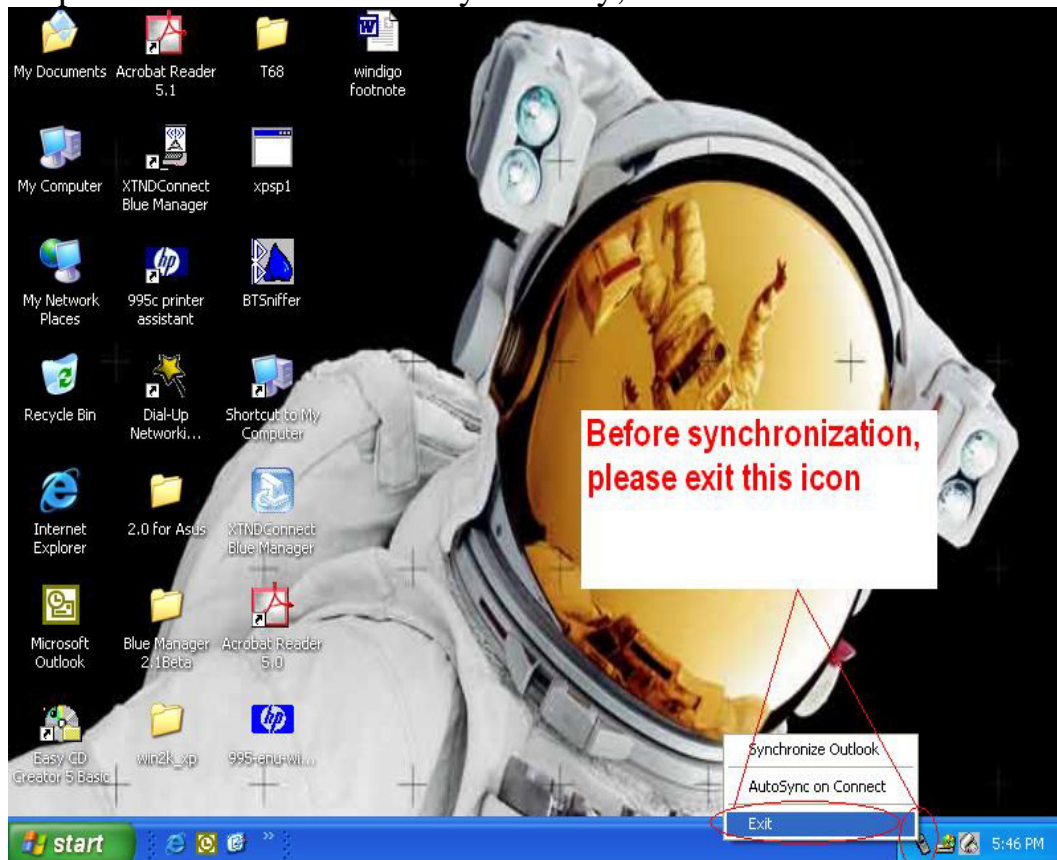


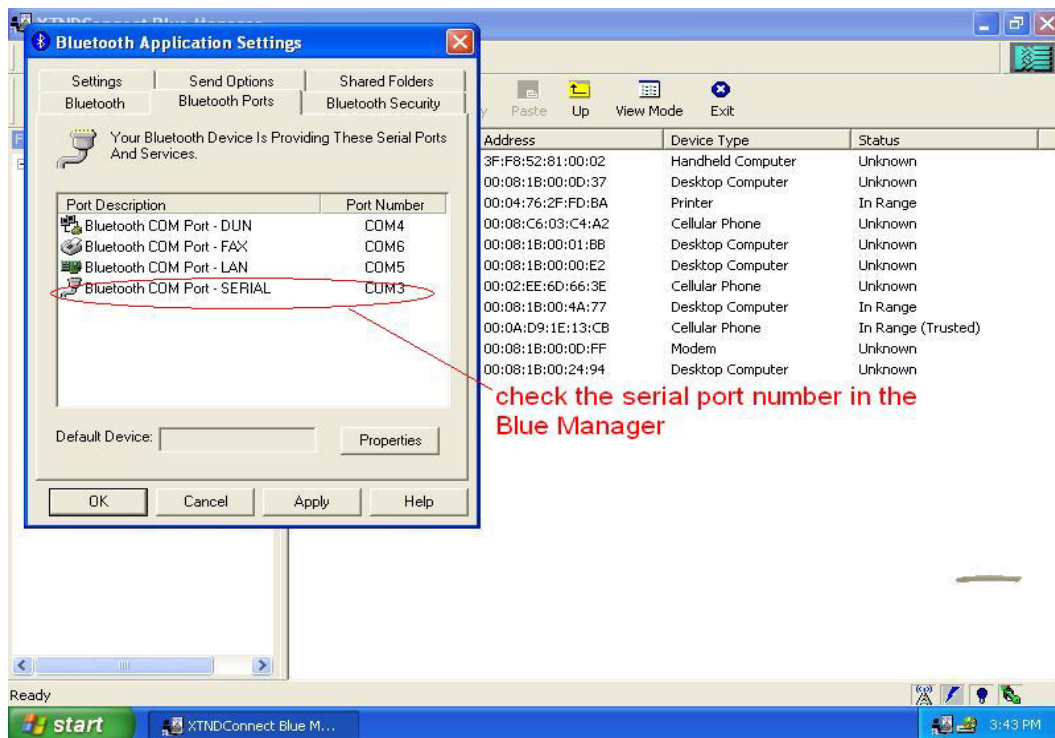
SonyEricsson T68i Synchronization With PC

The content below explains the detail steps how SonyEricsson T68i synchronizes your PC.

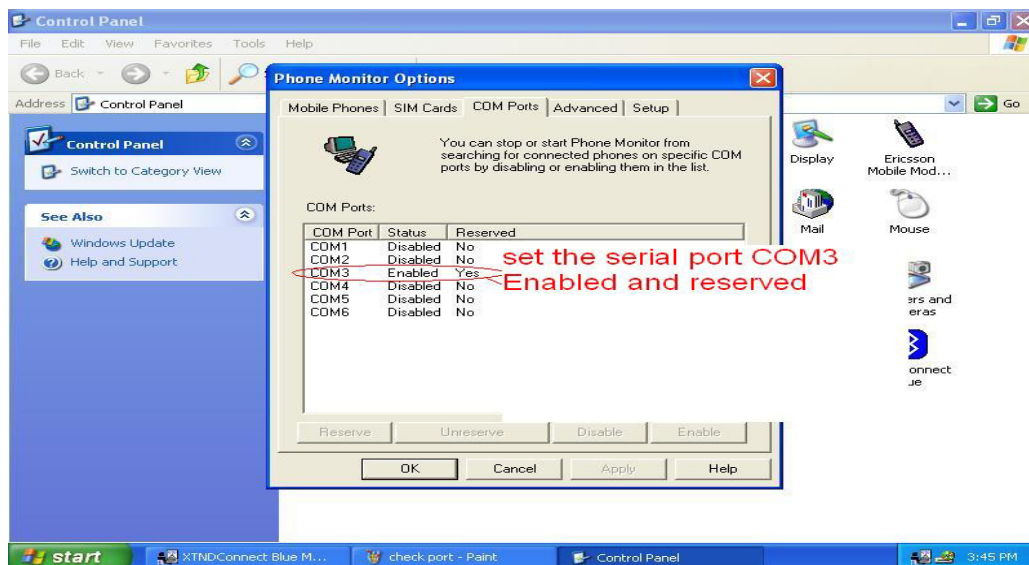
1. Please go to <http://www.sonyericsson.com/us/spg.jsp?page=start> and click 'global support' to download 'Package1_1_5_1.exe';
2. Install Windigo Systems Blue Manager 2.0 or above;
3. Install Microsoft Office with Microsoft Outlook;
4. Run MS Outlook;
5. Run Package1_1_5_1.exe; after reboot PC, before synchronization, please exit this icon from system tray;



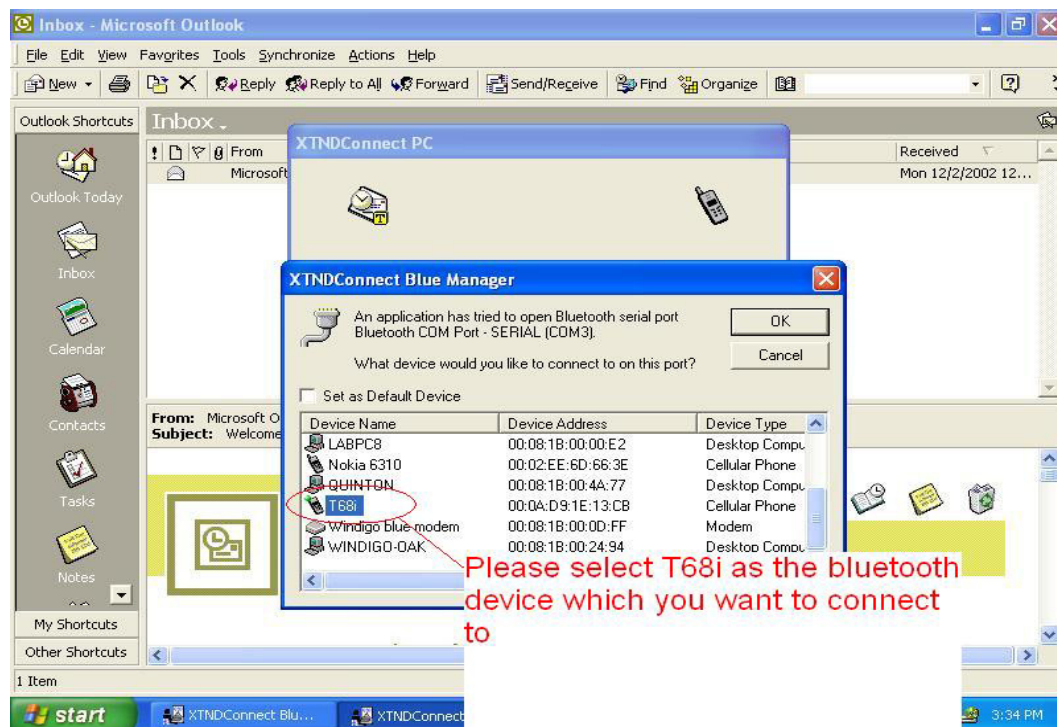
6. Run Blue Manager and check the serial port number, click Tools→Option→Bluetooth Ports, remember the serial port number;



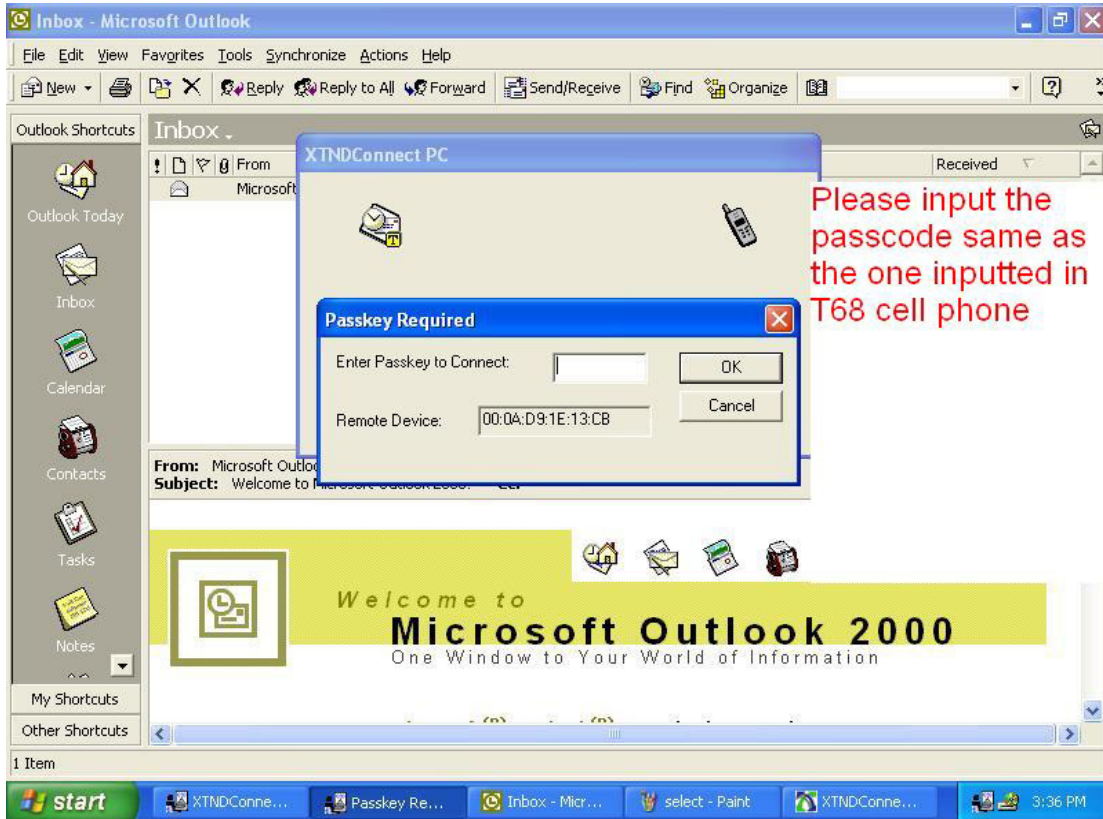
- Click Start→Control Panel, you can found a new icon 'Phone Monitor Options', double click this icon, in the jump out interface, go to 'COM Ports', set the serial port COM3 reserved and enabled. **Be sure, if any other device uses this virtual Serial COM port, please remove them or disable them temporarily.**



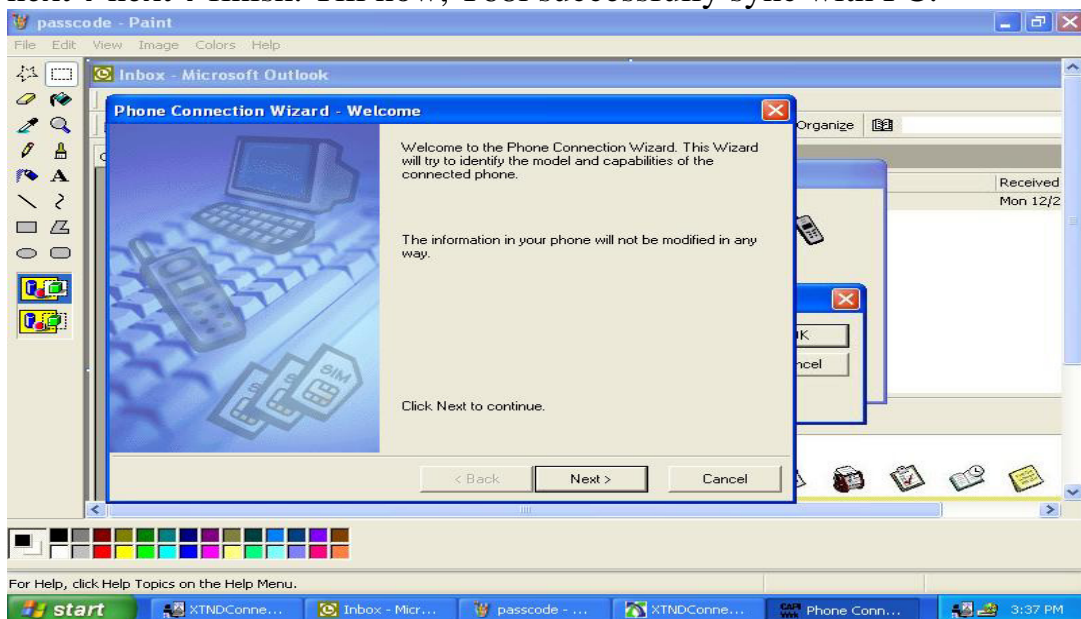
8. Till now, all settings are done, and open Outlook, Click Synchronize→Synchronize Now to establish the connection to your Bluetooth-enabled cell phone T68;
9. In your screen, there will jump out selection list menu, just select the Bluetooth device which you want to connect to, in this example of course we select T68i as our device, you also can save this as your default.



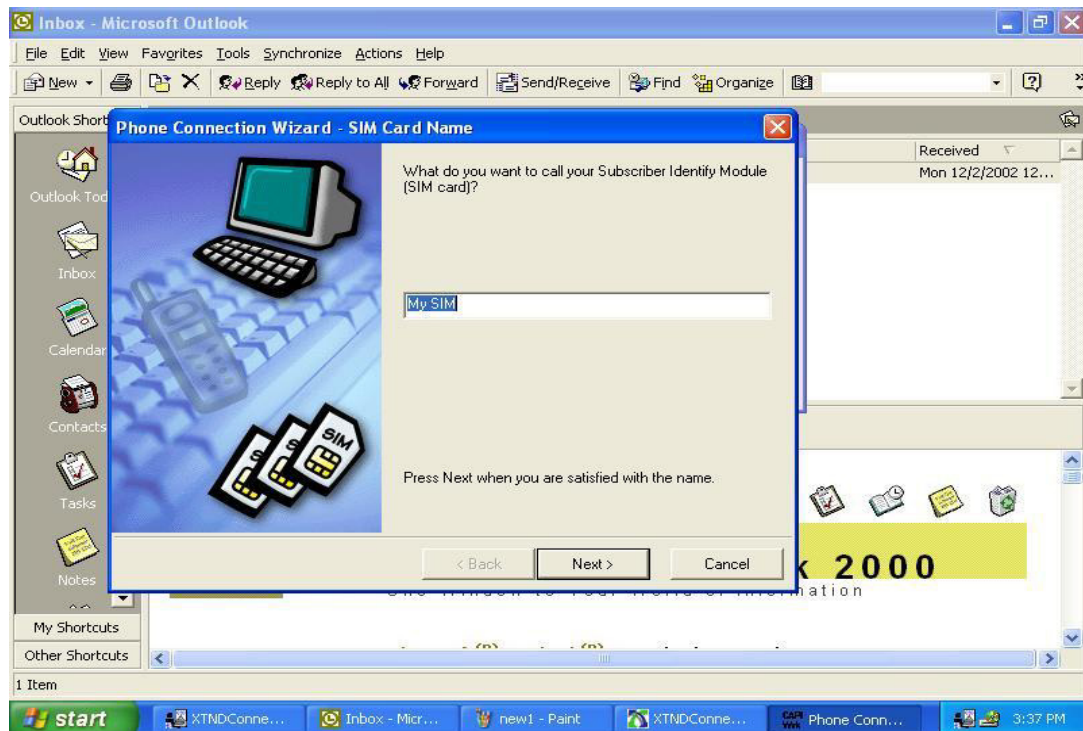
10. After selecting this device, check your cell phone, user can find pair request, please select accept and input the passcode such like '1234', and in you PC side there also jump out an password interface, input the password input in your cell phone.



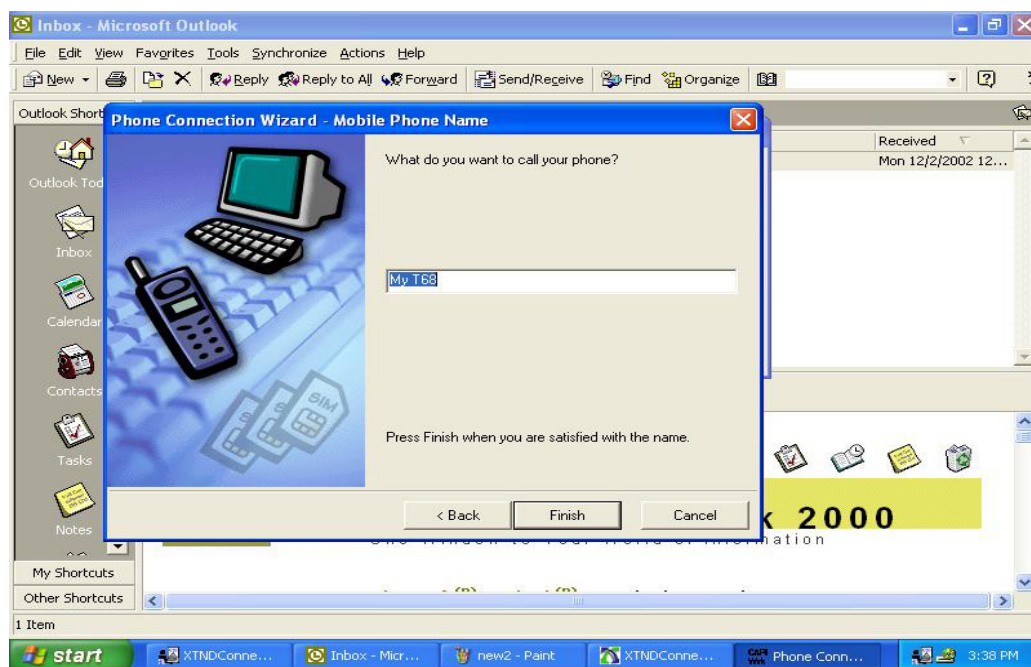
10. After pairing each other, PC will begin to sync with T68 Bluetooth-enabled cell phone. Some interfaces will appear and just simply click next→next→finish. Till now, T68i successfully sync with PC.



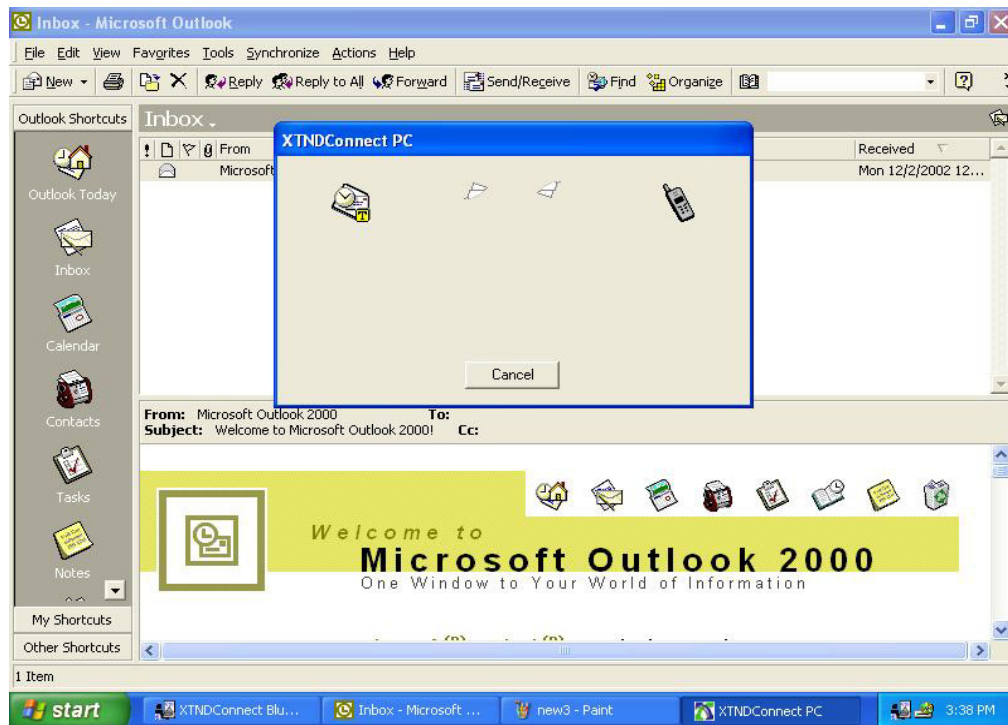
Click next to continue...



Click next to continue...



Click finish to finish settings...



Synchronizing...

Note: In this example, OS of PC is Windows XP with SP1, Cell phone is SonyEricsson T68i. Steps or result may vary with different environment.